

Cardboard Tray / Case Packer Side Infeed Multilane

Safe

Compact

Easy to use

Economical



CLM is an intermittent fully automatic cardboard tray packer with side infeed on multilane. Ideal for cans, bottles or multipacks, the complete collation is loaded onto the tray blank thanks to flight bar pusher offering fast and smooth product transfer. CLM can be configured to feed single products or multipacks coming from an upstream Autopack multipack bundler SIM. It is one of the most compact tray packer available on the market for speed up to 20 trays/min.

Multilane infeed



Side loading with flight bar pusher



Direct connection to Shrink Wrapper



The Autopack Package :Faster - Smaller - Simpler - Better Pack

Standard Features

- Stainless steel construction
- Speed up to 20 trays / min
- Flight bar pusher
- Integrated Control
- User friendly HMI
- Hot Melt Gluing System

Optional Features

- Infeed with product splitter
- Product stabiliser
- Package turning device
- Full pack detection with camera



Autopack designers pay particular attention to specifying materials and finishes that are durable, do not affect the packaged product and remain serviceable for a long time.

Explore Shrink Wrapping and our range of Machines at

www.Hollandpkg.com

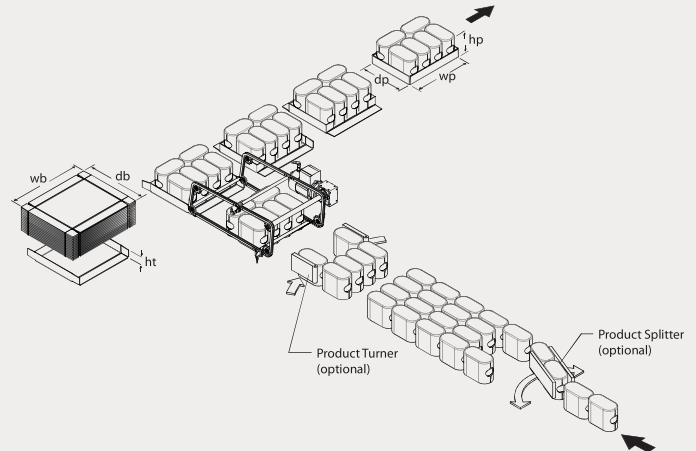
Cardboard Tray / Case Packer Side Infeed Multilane

Operation

- Products come from upstream and are distributed on single or multilanes either by accumulation or using a lane divider (optional). Products are then transferred to collating area by flight bar pusher while the tray index system prepares the tray. The blank is drawn from the magazine, formed into a "U" then placed between the fingers on the chain carrier.
- The chain carrier then indexes the tray to the loading station to merge with the products. Once the products are transferred onto the tray, the chain carrier indexes forward to the next station where inner corner flaps are folded and held in position during next indexing.

- During indexing, hot melted glue is applied onto the external flaps, glue shooting from top. The position and length of the glue patch is accurately controlled by the PLC program.
- The collation is then indexed to the last station where the external flaps are folded up onto the inner flaps and held firmly in position until the glue is firm enough for the tray to be indexed again and released onto outfeed conveyor or infeed of the shrink wrapper if any.

Specification	(All parameters in mm except "Film thickness")		60CLM	80CLM
Tray Size	Min-Max blank width	wb	320-520	340-720
	Min-Max blank depth	db	250-410	270-510
	Min-Max tray height ¹⁾	ht	40-70	40-70
Pack Size	Pack width	wp	220-420	240-620
	Pack depth	dp	150-300	170-410
	Pack height	hp	90-200	90-200
Packing Speed ²⁾	Trays/min		15-18	13-17
Electrical Supply	Average Power	kW	2.5	2.5
	Max Power	kW	6	6
Available in 220/380/415, 3ph, N+E, 50/60Hz				
Compressed Air	Working pressure	kPa	600	600
	Consumption	NL/Cycle	26	26
		CFM	15	15



Dimension	(All parameters in mm)		60CLM	80CLM
Total System	Machine height ³⁾		1855	1855
	Min. operating height ³⁾		850	850
	Machine width	W	2275	2515
	Tray packer length	L	2205	2590
	Infeed conveyor length	Cl	900	900
	Infeed height	Hi	850	850
	Oufeed height	Ho	850	850

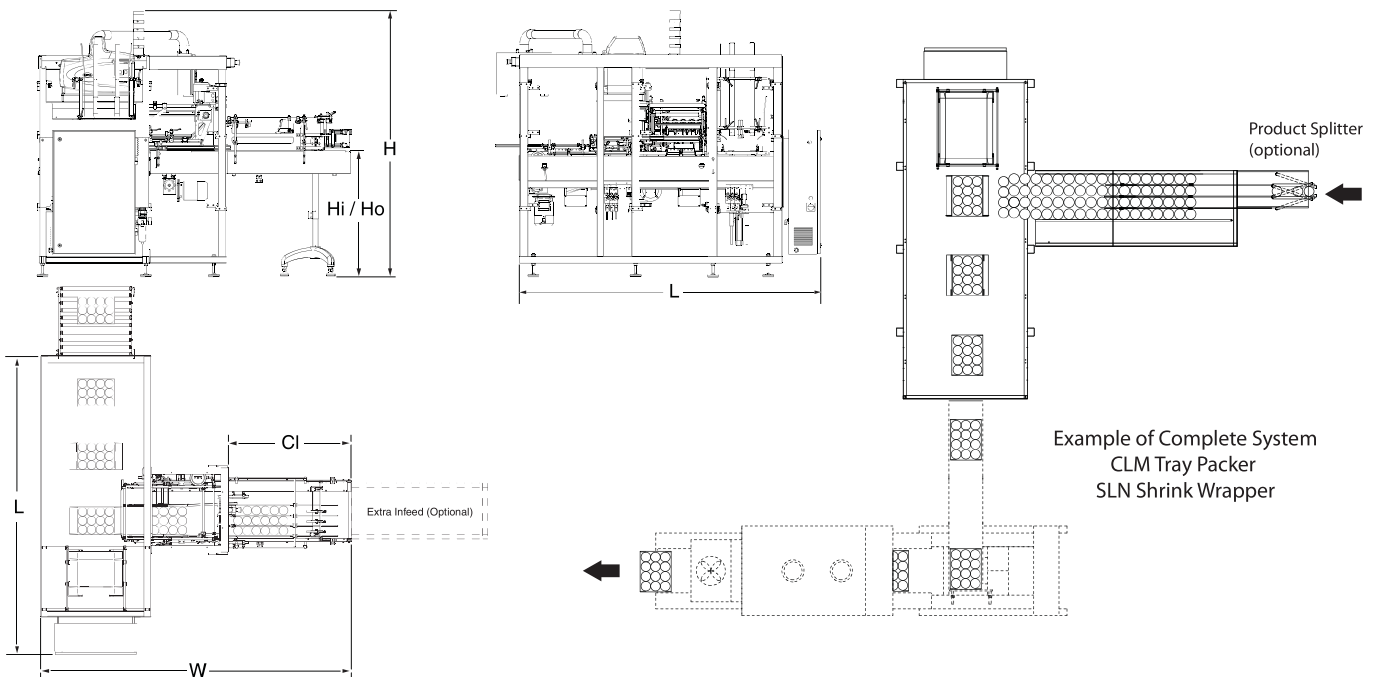
Note:

1) Minimum tray height can be as low as 30mm providing special preparation of cardboard. Also maximum tray height can be increased with special features such as inclined blank magazine and adapted blank extraction mechanism. Please contact us to discuss more details.

2) Packing speed depends on product depth and width, as well as the number of products on tray.

3) Height is adjustable from 850mm up to 900mm. Extension possible on request.

Above parameters are constantly reviewed and updated and may vary from project to project depending on customers requirements.



Example of Complete System
CLM Tray Packer
SLN Shrink Wrapper

