

v

ENGINEERING



PALLET WRAPPERS

HIGH TECH

ATR

PALLET WRAPPER BY ROTATING TABLE

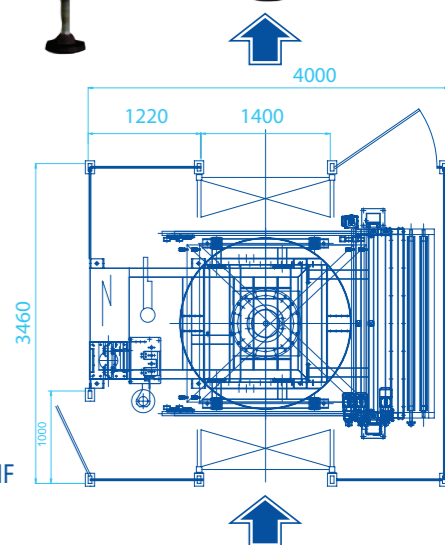
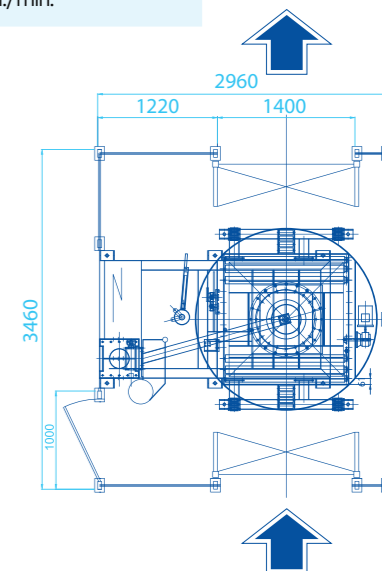
OPTIONAL

- Mechanical stabilizer
- Pre-stretcher 1:200-300
- Film tail sealer
- Top sheet applicator
- Transports inlet/outlet (by rollers or chains)

*Pallet wrapper by rotating table with automatic film hooking and wrapping cycle start.
Manual or automatic feeding by chain or motorized roller conveyors.
Frequency drive for progressive rotation start and for the speed variation of the film reel lifting/descent.
Machine equipped with metal mesh guardings, access door with microswitch and safety photocell at pallet inlet/outlet.*

Mod. ATR MF with top sheet applicator

Technical data	ATR-20	ATR-35
Production	20 pallet/h	35 pallet/h
Max pallet sizes	mm. 1200x1200x2100h	
Weight	kg. 2000	
Reel	Ø ext. 250 mm. - Ø int. 75 mm. - h 500 mm.	
Set up power	2 KW	6 KW
Voltage	380 Volt	
Air consumption	50 l./min.	65 l./min.



PALLET WRAPPER BY ROTATING ARM

OPTIONAL

- Mechanical stabilizer
- Pre-stretcher 1:200-300
- Film tail sealer
- Top sheet applicator
- max. wrapping h. 2700 mm
- Transports inlet/outlet (by rollers or chains)

Pallet wrapper by rotating arm, ideal for the wrapping of light and instable loads, with automatic film hooking and wrapping cycle start. Automatic feeding by chain or motorized roller conveyors. Frequency drive for progressive rotation start and for the speed variation of the film reel lifting/descent. Machine equipped with metal mesh guardings, access door with microswitch and safety photocell at pallet inlet/outlet.



Technical data	ABR-50	ABR-60
Production	50 pallet/h	60 pallet/h
Max pallet sizes	mm. 1200x1200x2100h	
Weight	kg. 2000	
Reel	Ø ext. 250 mm. - Ø int. 75 mm. - h 500 mm.	
Set up power	14 KW	16 KW
Voltage	380 Volt	
Air consumption	50 l./min.	100 l./min.

